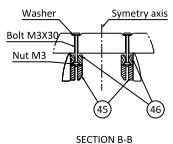
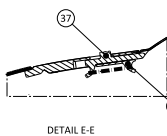


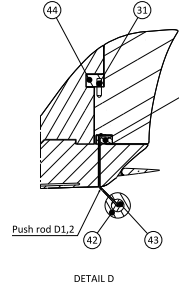
SECTION C-C



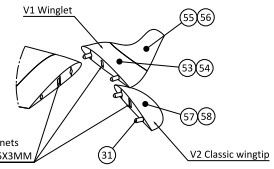
SECTION B-B



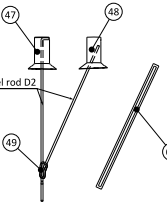
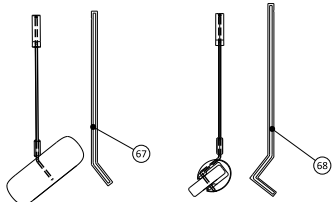
DETAIL E-E



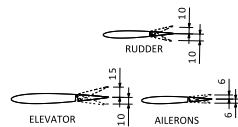
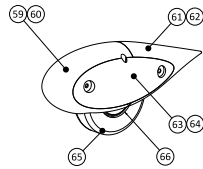
DETAIL D



WINGTIP DETAIL



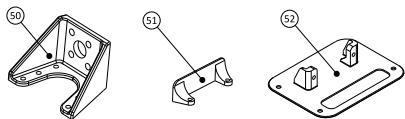
MAIN LANDING GEAR



Recommended throw

ITEM	NAME	CATEGORY
1	Spinner1	C
2	Spinner2	C
3	Canopy	B2
4	Fus1	B2
5	Fus2	B2
6	Fus3	B2
7	Fus4	B2
8	Fus5	B2
9	VTP	B2-LW
10	Rudder	B2-LW
11	Wing1L	B2-LW
12	Wing1R	B2-LW
13	Wing2L	B2-LW
14	Wing2R	B2-LW
15	Wing3L	B2-LW
16	Wing3R	B2-LW
17	Wing4L	B2-LW
18	Wing4R	B2-LW
19	Aileron1L	B2-LW
20	Aileron1R	B2-LW
21	Aileron2L	B2-LW
22	Aileron2R	B2-LW
23	Aileron3L	B2-LW
24	Aileron3R	B2-LW
25	HTP1L	B2-LW
26	HTP1R	B2-LW
27	HTP2L	B2-LW
28	HTP2R	B2-LW
29	Elev1L	B2-LW
30	Elev1R	B2-LW
31	Axis	C
32	Hinge_elev	C
33	Exhaust	C
34	Hinge_wing	C
35	Guide	C
36	TE lock	C
37	Lock_1	C
38	Lock_2	C
39	Tundra_rim	C
40	Tundra tyre	B2
41	Rudder_block	C
42	TyreD25	C
43	RimD25	C
44	Rudder_rudder	C
45	Anchor_nut_lower	C
46	Anchor_nut_top	C
47	LG_root_front	C
48	LG_root_rear	C
49	LG_fitting	C
50	Motor_holder	C
51	Servo_holder_fus	C
52	Servo_holder_Wing	C
53	Winglet_1L	B2-LW
54	Winglet_1R	B2-LW
55	Winglet_2L	B2-LW
56	Winglet_2R	B2-LW
57	Wingtip_rounded_1L	B2-LW
58	Wingtip_rounded_1R	B2-LW
59	Wheel_fairing_1L	C
60	Wheel_fairing_1R	C
61	Wheel_fairing_2L	C
62	Wheel_fairing_2R	C
63	Wheel_fairing_3L	C
64	Wheel_fairing_3R	C
65	TyreD40	C
66	RimD40	C
67	Pattern_LG1_tundra	C
68	Pattern_LG1	C
69	Pattern_LG2	C

- 88 Use 8 bottom layers
- 5 Deactivate "spiralize open contour / vase mode" and add 2 top layers
- 4 Use flexible material
- 3 Print it with ABS or any other heat resistant material



2 - Center of gravity marking under the wing

1 - Red parameters are mandatory to ensure airplane functionality, assembly or weight target.

PRINTING PARAMETER	CATEGORY		
	B2-LW	B2	C
Layer height (mm)	0.25	0.2	0.13
Bottom layers	4	4	4
Top layers	0	0	6
Wall lines / perimeter	1	1	2
Nozzle diameter (mm)	0.4	0.4	0.4
Material	LW-PLA	PLA+ / PETG	PLA/PETG TPU/ABS
Infill density (%)	0	0	10
Printing temp (°C)	235	220	205 to 240
Bed temp (°C)	60	60	60
Spiralize Outer Contour / vase mode	YES	YES	NO
Flow (%)	53	100	100
Retraction (mm)	0.5 to 3	0.5 to 3	3
Retraction extra prime amount (mm)	0 to 0.7	0 to 0.7	0
Speed (mm/s)	55	50	25 to 50
Fan	YES	YES	YES
Brim (mm)	3 to 5	3 to 5	0 to 3
Minimum layer time (s)	5	5	5
Support	NO	NO	NO